

ADA Compliant Detectable Warning Surface Tactiles



Detectable Warning Surface Tiles offer an ADA compliant safety flooring for a multitude of locations including sidewalks, stairwells, metrorail platforms and marinas.

These detectable warning tiles are constructed of a heavy-duty fiberglass composite material that will hold to years of high-traffic usage. These tiles are UV stable and will prohibit any glare.

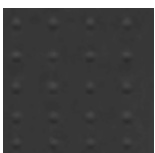
Two styles of these visually-impaired surfaces are available for both new construction and retrofitting existing pavers. Both surface tiles offer the same textured, domed surface pattern.

Our warning surface tiles are slip-resistant, even when wet. Additionally, tiles are not affected by cleaning chemicals or ice-melting pellets.

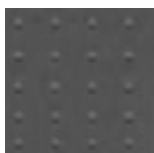
All anchors and special adhesives are included.

Item No: ACDWST

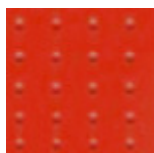
Standard Colors



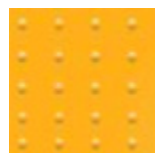
Black



Dark Grey



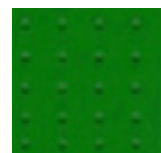
Brick Red



Safety Yellow



Royal Blue



Forest Green