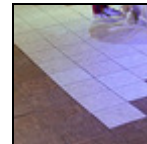
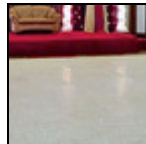


Luxury White Marble Dance Floor Tiles



Luxury White Marble Dance Floor Tiles allow you to create a custom, safe, durable floor surface that protects the layer underneath and covers any existing imperfections. Portable Dance Floor Tiles easily connect together and are perfect for both standard sizes/shapes and fully custom floor configurations. These tiles are easy to assemble without tools - and your event space is ready to go in minutes.

Luxurious white marble texture looks great in any setting!

- Each 12" x 12" interlocking floor tile is 1/2" thick.
- 3" deep reducers (beveled edges) are also available.
- Fully waterproof - don't ever worry about spills or moisture; these dance tiles are suitable for indoor & outdoor use.
- Compatible with similar dance floor tiles - easily mix and match different colors and designs.
- 4 attachment-point design prevents tiles from wobbling, shaking or separating, even with constant use.

Item No: LWMDFIT

Standard Sizes (Approximate)

Size	Qty. 1-500	Qty. 501-1000	Qty. 1001-2500	Qty. 2501-5000
12" x 12" Tile	\$6.99	\$6.95	\$6.90	\$6.85
Male Edge	\$3.79	\$3.77	\$3.75	\$3.73
Male Corner Edge	\$3.79	\$3.77	\$3.75	\$3.73
Female Edge	\$3.79	\$3.77	\$3.75	\$3.73
Female Corner Edge	\$3.79	\$3.77	\$3.75	\$3.73

Standard Colors

Luxury White Marble