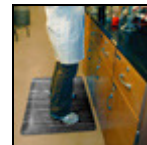
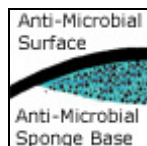
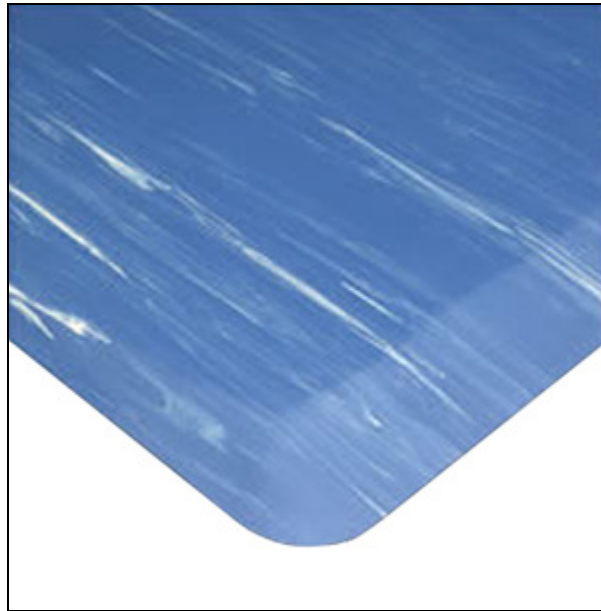


## Wearwell 420 Tile-Top AM SpongeCote Anti-Fatigue Mats



The Wearwell 420 Tile-Top SpongeCote Anti-Fatigue Mats offer a stylish surface design combined with anti-microbial protection and long-lasting comfort when standing all day. The 420 Tile-Top Mat's Nitricell sponge underside offers superior cushion and rebound thanks to a PVC/Nitrile Rubber foam that outlasts similar vinyl foams while also containing an anti-microbial agent to neutralize bacteria and other contaminants. The Wearwell Tile-Top Mat's smooth vinyl surface looks great, is easy to clean and also contains the anti-microbial treatment.

- Available 1/2" thick with beveled safety edges on all sides.
- Wearwell 420 SpongeCote Anti-Fatigue Mats can be made in virtually any custom shape and size.
- These Wearwell anti-fatigue mats are ideal for use in retail stores, banks, hotels, and office settings.
- Environmental Green Rating: 35% Recycled Content.

Item No: FMT

**Standard Sizes (Approximate)**

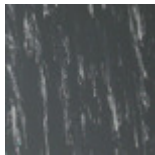
Size	Qty. 1	Qty. 2-10	Qty. 11-25	Qty. 26+
1/2" Thick - 2' x 3'	\$63.40	\$62.92	\$62.28	\$60.32
1/2" Thick - 2' x 4'	\$87.36	\$86.06	\$82.88	\$80.96
1/2" Thick - 2' x 6'	\$131.04	\$129.12	\$124.32	\$121.44
1/2" Thick - 2' x 8'	\$174.72	\$172.16	\$165.76	\$161.92
1/2" Thick - 3' x 4'	\$131.04	\$129.12	\$124.32	\$121.44
1/2" Thick - 3' x 5'	\$163.80	\$161.40	\$155.40	\$151.80
1/2" Thick - 3' x 6'	\$196.56	\$193.68	\$186.48	\$182.16
1/2" Thick - 3' x 8'	\$262.08	\$258.24	\$248.64	\$242.88
1/2" Thick - 3' x 10'	\$327.60	\$322.80	\$310.80	\$303.60
1/2" Thick - 3' x 12'	\$393.12	\$387.36	\$372.96	\$364.32
1/2" Thick - 3' x 15'	\$491.40	\$484.20	\$466.20	\$455.40
1/2" Thick - 4' x 6'	\$262.08	\$258.24	\$248.64	\$242.88
1/2" Thick - 4' x 8'	\$349.44	\$344.32	\$331.52	\$323.84
1/2" Thick - 4' x 10'	\$436.80	\$430.40	\$414.40	\$404.80
1/2" Thick - 4' x 12'	\$524.16	\$516.48	\$497.28	\$485.76
1/2" Thick - 4' x 15'	\$655.20	\$645.60	\$621.60	\$607.20

**Custom Sizes - Per Sq. Ft. (Approximate)**

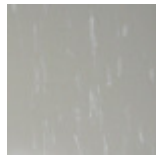
Size	Qty. 1	Qty. 2-10	Qty. 11-25	Qty. 26+
2' Wide - 1/2" Thick	\$10.92	\$10.76	\$10.36	\$10.12
3' Wide - 1/2" Thick	\$10.92	\$10.76	\$10.36	\$10.12
4' Wide - 1/2" Thick	\$10.92	\$10.76	\$10.36	\$10.12

**Available Colors**

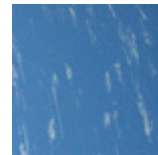
Black



Charcoal



Gray



Blue